



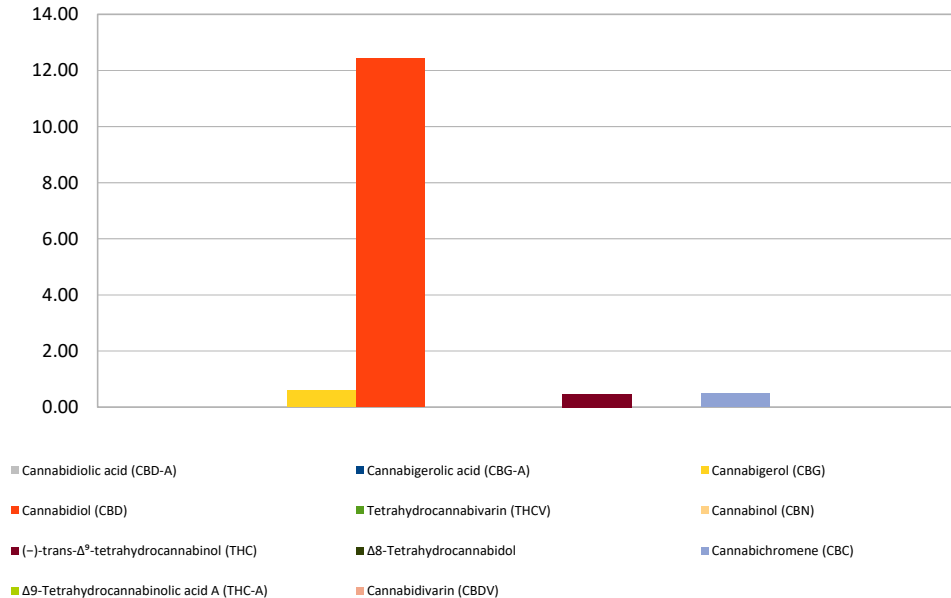
Cannabinoid Profile

Customer: Lichen Livin
Customer Sample ID: 1000 T
Laboratory Number: 201905-0100
Extraction Technician: DF
Analytical Chemist: GB
Density (g/mL): 0.930

Extraction Date(s):	Analysis Date(s)
5/2/2019	5/2/2019

Cannabinoid (HPLC)		Results	
	LOD (mg/mL)	Percent	mg/mL
Cannabidiarin (CBDV)	<0.2		
Cannabidiolic acid (CBD-A)	<0.2		
Cannabigerolic acid (CBG-A)	<0.2		
Cannabigerol (CBG)		0.059%	0.59
Cannabidiol (CBD)		1.244%	12.44
Tetrahydrocannabivarin (THCV)	<0.2		
Cannabinol (CBN)	<0.2		
(-)-trans- Δ^9 -tetrahydrocannabinol (THC)		0.046%	0.46
Δ^8 -Tetrahydrocannabidol	<0.2		
Cannabichromene (CBC)		0.049%	0.49
Δ^9 -Tetrahydrocannabinolic acid A (THC-A)	<0.2		
Cannabinoids Total		Percent	mg/g
Max Active THC		0.05%	0.46
Max Active CBD		1.24%	12.44
T. Active Cannabinoids		1.40%	13.98
Total Cannabinoids		1.40%	13.98
Ratios			
26.76 CBD to THC		0.04 :1 THC to CBD	

Cannabinoid (mg/mL)



Altitude Consulting, LLC utilizes NIST traceable Reference Standards and Certified Reference Material to calibrate analytical instruments along with proven analytical methods. The methods are applied in the most ethical manner following good laboratory practice guidelines. The results of this report are based solely on the sample submitted and cannot be reproduced.

This report expires 30 days after analysis date.